

The chemical composition of Amazonian plants^(*)

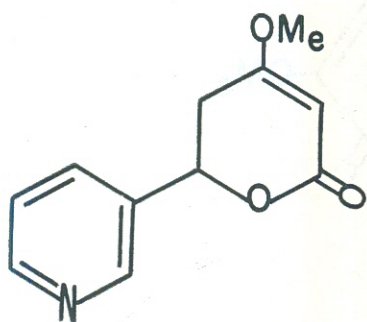
A Catalogue, edited by Setor de Fitoquímica, INPA, Manaus, Amazonas

FAMILY :
Lauraceae

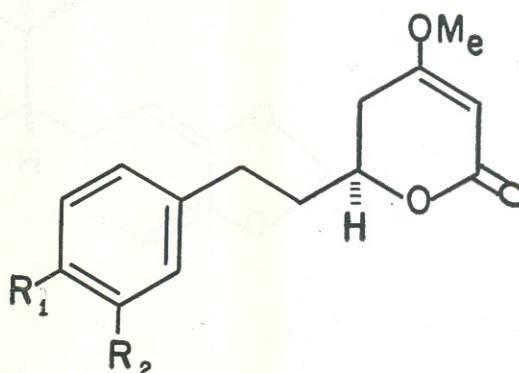
SPECIE :
Aniba gigantifolia O. C. Schmidt

OCCURRENCE : Manaus, Amazonas

TRUNK WOOD :
anibine (I)
(6S)-dihydrokawain (IIa)
(6S)-dihydromethysticin (IIb)
(6S)-tetrahydroiangonin (IIc)
(6S)-tetrahydro-11-methoxyiangonin (IId)



(I)



- (IIa) $R_1=R_2=H$
(IIb) $R_1=R_2=OCH_2O$
(IIc) $R_1=OMe; R_2=H$
(IId) $R_1=R_2=OMe$

REFERENCES :

1. Von Bülow, M. V., Franca, N. C., Gottlieb, and Puentes Suarez, A. M. (1973) *Phytochemistry* 12, (no prelo)
2. Gottlieb, O. R. (1972) *Phytochemistry* 11, 1537
3. Saver, H. and Hänsel, R. (1967) *Planta Med.* 15, 443
4. Achenbach, H., Karl, W. and Smith, S. (1971) *Chem. Ber.* 104, 2688

(*) — Contributions to this catalogue, which will be continued in subsequent issues of this Journal, are invited, and should be submitted to adress given above.

FAMILY :
Lauraceae

SPECIE :
Aniba guianensis Aubl.

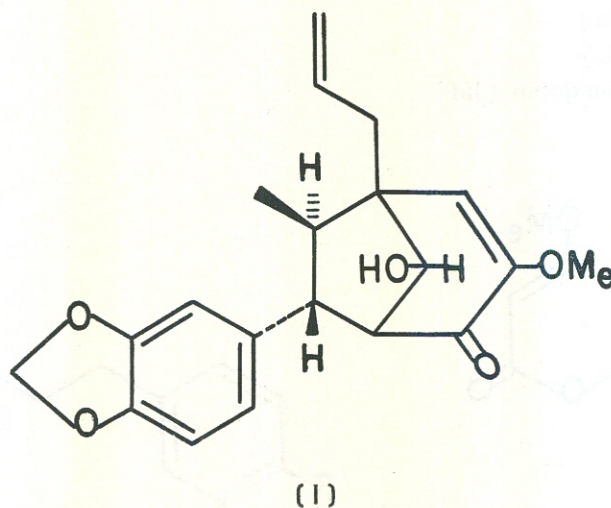
OCCURRENCE : Manaus, Amazonas

TRUNK WOOD :

benzyl benzoate
benzyl salicylate

O-methyleugenol
O-methylisoeugenol

guianin (1-allyl-8-hidroxy-3-methoxy-7-methyl-4-oxo-6-piperonyl-bicyclo [3.2.1] oct-2-en) (1)



REFERENCES :

1. Andrade da Mata Rezende, C. M., Gottlieb, O. R., Leão da Silva, M. and Soares Maia, J. G. (1973) *Phytochemistry* 12, 471
2. Araujo Lima, O., Gottlieb, O. R. and Taveira Magalhães, M. (1972) *Phytochemistry* 11, 2031
3. Aiba, C. J., Braz Filho, R. and Gottlieb, O. R. (1973) *Phytochemistry* 12, 413
4. Gottlieb, O. R. (1972) *Phytochemistry* 11, 1537.